

# (Re)connecting with the 6 Rs

## A Workshop Series on Ethical

### Native-Engaged Research

Respect, Relationality, Responsibility,  
Representation, Relevance, and  
Reciprocity

April 3, 2026

Session 3: Reciprocity



Artist: Paula TopSky Houtz Shoshone-Bannock/Chippewa Cree

# Land Acknowledgement

Acknowledging Native lands is an important way to honor and respect Indigenous peoples and their traditional territories. The land on which Idaho State University Pocatello campus sits is within the original Fort Hall Reservation boundaries and is the traditional and ancestral home of the Shoshone and Bannock peoples. We acknowledge the Fort Hall Shoshone and Bannock peoples, their elders past and present, their future generations, and all Indigenous peoples, including those upon whose land the University is located. We offer gratitude for the land itself and the original caretakers of it.

As a public research university, it is our ongoing commitment and responsibility to teach accurate histories of the regional Indigenous people and of our institutional relationship with them. It is our commitment to the Shoshone-Bannock Tribes and to ISU's citizens that we will collaborate on future educational discourse and activities in our communities.



# Workshop Series Year 2

Past workshop  
Friday February 6:  
**Responsibility**

Keynote:  
Dr. Salena Beaumont Hill

Past workshop  
Friday February 6:  
**Representation**

Keynote:  
Dr. Laticia Herkshan

Friday, April 3:  
***Reciprocity***

Keynote: Dr. Ranalda Tsosie

Plenary: Antoinette Cavanaugh

Year 3: *Relevance*, Repair, Reflecting

# Workshop Series Year 2-April 3: *Reciprocity*

## Friday, April 3: *Reciprocity*

- 9am Welcome & Introduction  
to reciprocity
- 9:45a Plenary: Antoinette Cavanaugh
- 10:35 Morning break
- 11:40 Keynote: Dr. Ranalda Tsoie  
(Diné) New Mexico Institute for  
Mining and Technology
- 12:00 Lunch
- 12:40 Case Study Activity and Panel

- 1:40 Deep listening activity
- 2:00 Post-survey
- 2:10 Closing reflection conversation
- 2:30 Afternoon snack
- 2:45 Field Trips!
- Chief Eagle Eye Reserve
  - Walking Tour: Idaho State Museum,  
Wassmuth Center, & Boise River
- 5:30 Return to Museum

# Idaho EPSCOR I-CREWS Welcome

## **Rick Schumaker**

Associate Project Director and Project Administrator of  
Idaho EPSCoR

Idaho Community-engaged Resilience for Energy-Water  
Systems Award (I-CREWS)

<https://idahocrewws.org/>

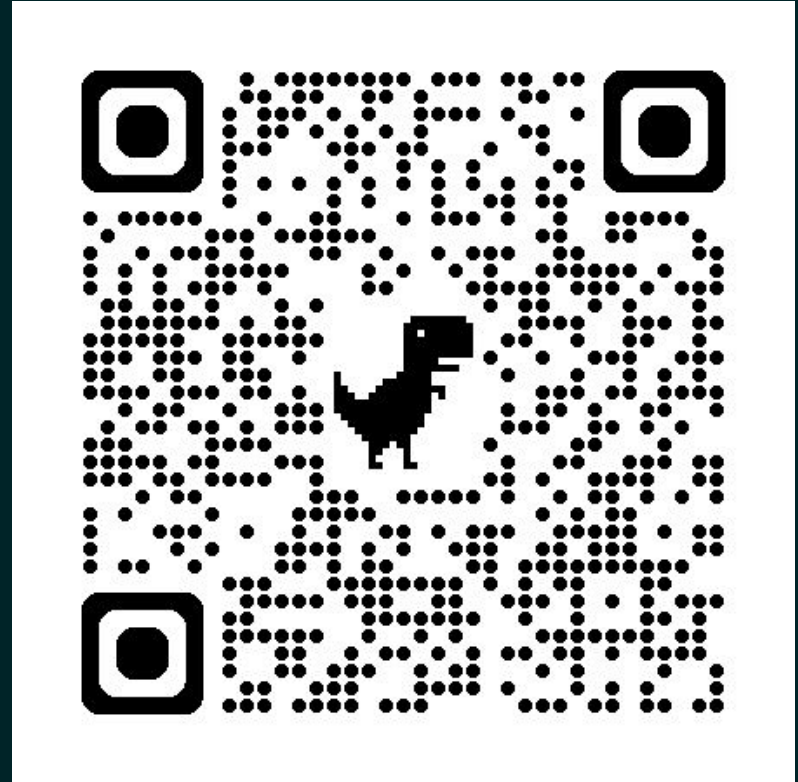


Funding for this project is provided by NSF EPSCoR under [Award Number 2242769](#).

# Pre-Survey

Please help us assess workshop effectiveness by taking our anonymous pre-survey.

<https://bit.ly/4v4wzzt>



# Year 2: Day 3: Reciprocity

## Today's Workshop Outcomes



- Explain the concept of 'reciprocity' beyond the transactional.
- Identify multiple ways reciprocity can be enacted to strengthen research relationships and support capacity sharing.
- Explain how reciprocity intersects with the other Rs in the research process.
- Apply the 6Rs concept of 'Reciprocity' to your own work

# Planning Committee



Shanny Spang  
Gion, UI



Sonia  
Martinez,  
ISU



Shawna  
Campbell-Daniels,  
CDA



Sophia  
Borgias, BSU



Dalyna Hannah,  
UI



Georgia  
Hart-Fredeluces,  
ISU



Liz Redd, ISU



Sacha Johnson,  
UI



Cecily  
Shepherd, ISU



Malynndra  
Tome, UI



Rachel Havok,  
ISU



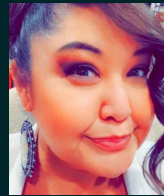
Alonzo Coby,  
SBT



Rebecca Croy,  
SBT/ISU



Miranda  
Striluk, CWI



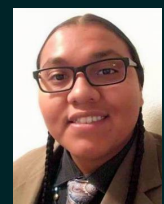
Jessica James,  
SBT



Julia Alcala,  
ISU



Bailey Dann,  
SBT



Nolan Brown,  
SBT



**Practices**

Norms, not rules  
Safe Space



**Empathetic**

Thinking & feeling  
Listening to understand



**Active**

Active listening and  
contributing



**Communal**

Shared space for all voices  
& perspectives



**Engagement**

Multidirectional  
Building relationships & Community



Tool:  
Pause



Tool:  
"Ouch"



Tool:  
Calling in



# Introduction to the Workshop Series

## The 6 Rs



- Respect
- Relationality
- Responsibility
- Representation
- **Reciprocity (focus for today)**
- Relevance

Kirkness & Barnhardt (1991)

Tsosie et al. (2022)

# Individual Reflection

1. *How do I embody reciprocity as praxis in my research efforts and otherwise?*
2. *How might attending to reciprocity closely and constantly before, during, after a research project change what is produced by that research? (adapted from McGregor and Marker, 2018)*



# Plenary Speaker

*“Operationalizing Reciprocity: From Values to Accountability in Organizational Systems”*

**Antoinette Cavanaugh**, PhD Candidate  
Shoshone-Paiute Tribes

Author of 'Tammi' tetevini, “Ne Hakannai Kimmakkante?”  
Little Brother asks, “Where Did I Come From?”



## *Break*



We will be back  
at:  
10:50 am  
Mountain Time

# Keynote Speaker

*“Giving Back, Moving Forward:  
Reciprocity as a Guiding Principle in  
Collaborative Research”*

**Ranalda Tsosie, Ph.D.**

Diné (Navajo)

Director of Environmental Science Program,  
Assistant Professor Department of Earth &  
Environmental Science, New Mexico INstitute of  
Mining and Technology



# Question and answer/closing remarks with Dr. Tsosie



# Lunch



We will be back

at:

12:40pm

Mountain Time



# Working towards the 6 Rs: Shoshone–Bannock Food Sovereignty



Sidney Fellows  
(Shoshone-Bannock),  
Organic Community  
Food Systems  
Consultant, Rodale  
Institute



Bailey Dann  
(Shoshone-Bannock),  
Research and  
Education Specialist,  
Language and Culture  
Preservation  
Department,  
Shoshone-Bannock  
Tribes



Nolan Brown  
(Shoshone-Bannock),  
Original Territories  
and Research  
Program Manager,  
Language and Culture  
Preservation  
Department,  
Shoshone-Bannock  
Tribes



# Scenario

Think of a landscape that seems out-of-balance due to agricultural practices.

The imbalance could be due to the use of synthetic chemicals, the introduction of non-native species, related soil health issues, human (dis)engagement on the land, or other factors that have greatly changed the landscape in recent (10-150 years) years.

You care deeply about this landscape. This is a landscape that reminds you of your absolute, utter, and complete dependence on the earth for all things needed to survive & live well.

# Question

*What does reciprocity mean to you in this scenario?*

You are asked to support work to bring balance back to this landscape. You rely on your personal passions, professional background, and other relevant experiences to inform how you support this work.

# Deep-Listening Activity



Laura Laumatia, Ph.D.  
Environmental Programs Manager  
Coeur d'Alene Tribe



# Post-Survey



<https://bit.ly/4dmzoph>

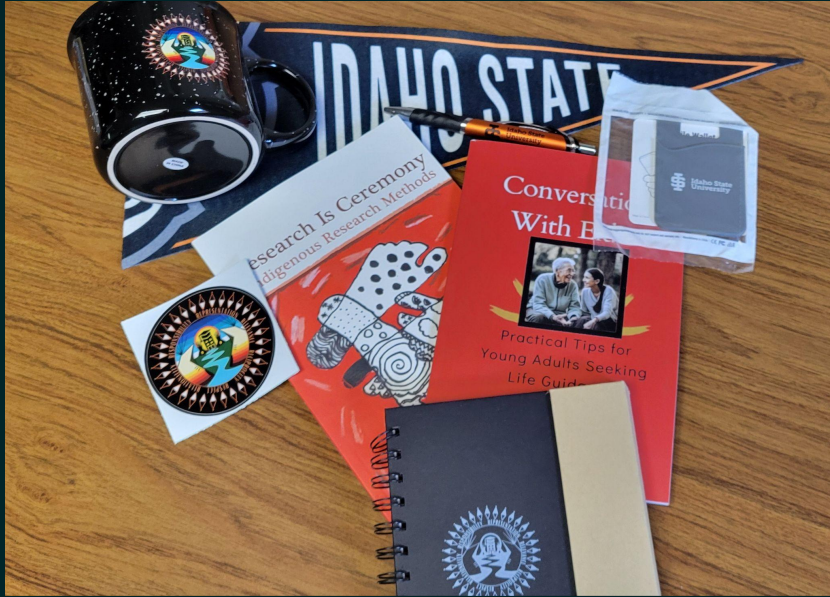


# Closing conversation



Photo by Rebecca Wallick

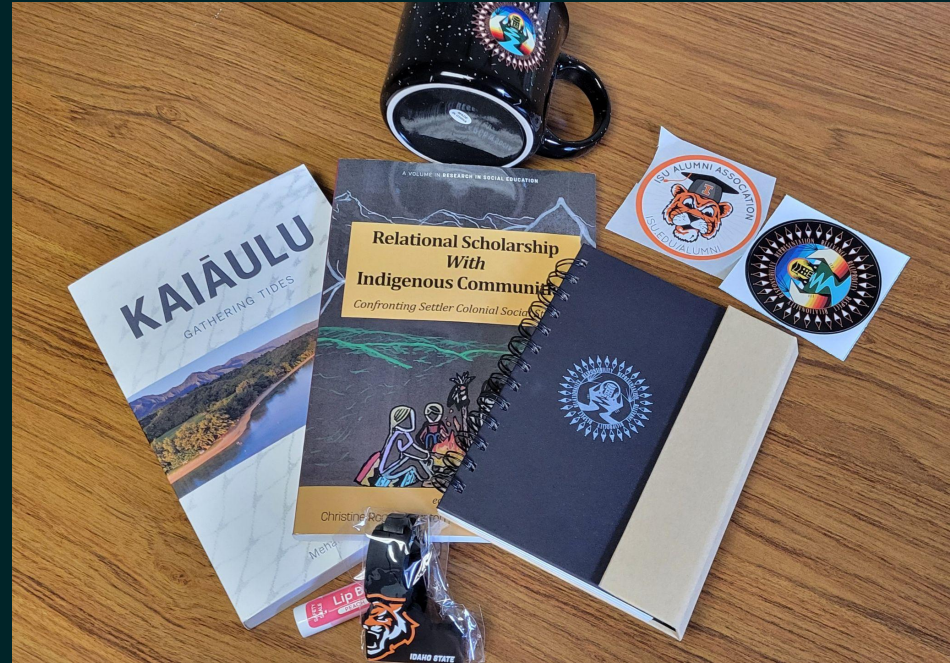
# Closing-Door Prizes! Prize 1



Thank you to our door-prize sponsors.  
From Idaho State University: ISU Alumni Association, the ISU Department of Anthropology and Languages, ISU I-CREWS, and the University of Idaho: EPSCoR Office.

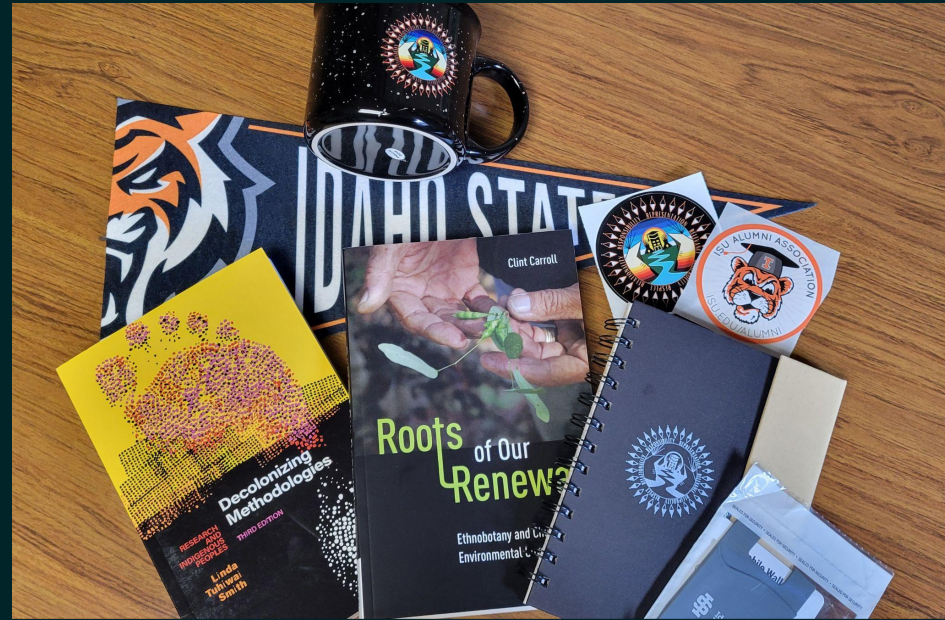
# Closing-Door Prizes! Prize 2

Thank you to our door-prize sponsors.  
From Idaho State University: ISU Alumni  
Association, the ISU Department of  
Anthropology and Languages, ISU I-CREWS,  
and the University of Idaho: EPSCoR Office.



# Closing-Door Prizes! Prize 3

Thank you to our door-prize sponsors.  
From Idaho State University: ISU Alumni  
Association, the ISU Department of  
Anthropology and Languages, ISU I-CREWS,  
and the University of Idaho: EPSCoR Office.



# Grand Prize: Pre- and Post-Survey takers only!!

Thank you to our Grand prize sponsors.  
From Idaho State University: The Department  
of Anthropology and Languages, and ISU  
I-CREWS.



# Thank you!

## 2027:

- Relevance
  - In Northern Idaho, Coeur d'Alene lands
- Repair (virtual)
- Reflecting on the Workshop series (virtual)



Scan to sign up for  
email notifications  
for next year's  
workshops



# Works Cited

- Kirkness, V. J., & Barnhardt, R. (1991). First Nations and higher education: The four R's—Respect, relevance, reciprocity, responsibility. *Journal of American Indian Education*. 1-15.
- Tsosie, R. L., Grant, A. D., Harrington, J., Wu, K., Thomas, A., Chase, S., Barnet D., Hill, S. B., Bellcourt, A., Brown, B., and Plenty Sweetgrass-She Kills, R. (2022). The 6 Rs of Indigenous Research. *Journal of American Indian Higher Education* 33(4).  
<https://tribalcollegejournal.org/the-six-rs-of-indigenous-research/>